



Dealer

Disclaimer: All the locations marked on the map are of dealers head offices

R210E



This Machine is designed for general construction and Infrastructure application like soil Excavation and Sand Loading.

OPERATING WEIGHT : 20450- 20600 kg | GROSS POWER : 140 HP @ 2000 rpm | BUCKET CAPACITY : 0.87 - 0.92 m³

HD Construction Equipment India Pvt. Ltd.

Factory Location

Plot No. A-2, M.I.D.C. Chakan, Phase II,
Village: Khalumbre, Taluka: Khed, Dist: Pune-410501
E mail: hyundai.care@theconnectionsindia.com
Toll Free No.: 1800 209 8600

Please Contact

Scan the QR code with your phone camera & visit



SEP 2025

[@hdhyundaiceindia](https://www.facebook.com/hdhyundaiceindia) | [@hdhyundaiceindia](https://www.instagram.com/hdhyundaiceindia) | [@hdhyundaiceindia](https://www.linkedin.com/company/hdhyundaiceindia) | [@HyundaiCEindia](https://www.youtube.com/channel/UC...)

* Design aesthetics & features may vary from actual

DESIGNED FOR SMART WORK

R210E

BEST-IN-CLASS PERFORMANCE

- Advanced CAPO System
- Hydraulic Flow Summation
- Swing Priority
- Regeneration System
- Excellent Digging Forces

OPERATOR COMFORT

- Bluetooth FM Radio
- Removable Type Floor Mat
- Spacious Cabin
- Fully Adjustable Seat
- Enhanced Visibility
- User-friendly Functionality
- LED Working Lamps

INCREASED MACHINE DURABILITY

- Superior Lubrication and Wear Protection
- Polymer Shim
- Proven Upper Structure
- Forged Ring Body



IMPROVED FUEL EFFICIENCY

- New ECO Mode
- Fuel Saving Kit
- Electro Hydraulic System
- Auto Deceleration System
- Efficient Breaker Mode

SIMPLIFIED MAINTENANCE

- Fuel Filler Pump*
- Easy Serviceability
- Extended Maintenance
- Large Capacity Fluid Tank
- Low Life Cycle Cost

PARTS & SUPPORT

- Remote Management System (Hi-Track)
- Hyundai Genuine Parts
- Max Parts Availability
- On-Site Product Support

ENHANCED SAFETY

- Emergency Shutdown Switch*
- Seat Belt*

(* Optional)

This Machine is designed for general construction and Infrastructure application like soil Excavation and Sand Loading.

PERFORMANCE

PRIDE AT WORK

Hyundai construction equipment strives to build state-of-the-art earthmoving equipment to give every operator maximum performance, more precision, versatile machine preferences, and proven quality. New technologies designed to improve performance and precision, make the Hyundai excavator smooth, fast and easy to control. Take pride in your work with Hyundai!



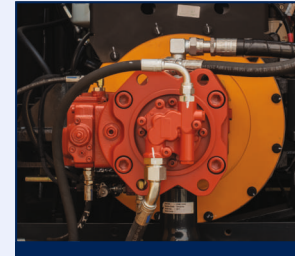
ENGINE

The water cooled, 4 cycle diesel, 6 cylinder in line, direct injection turbocharged engine is built for power, reliability, efficiency.

The engine is manufactured to perform in wide range of heat, humidity and dust conditions without compromising on productivity.



R210E



HYDRAULIC SYSTEM

Electro Hydraulic Control System provides wide range of flow at various workloads for paramount productivity. Open center design of Main Control Valve (MCV) ensures fast response and maximum efficiency in tough conditions.

CHOICE OF OPERATING MODE

Working Mode	Advantage
P Mode	<ul style="list-style-type: none"> • Maximum Power • Fast Cycle time
S Mode	<ul style="list-style-type: none"> • Balance between power and fuel efficiency
Eco Mode	<ul style="list-style-type: none"> • Better fuel efficiency
Breaker Mode	<ul style="list-style-type: none"> • Sets pump flow to optimal level and boosts efficiency

BEST-IN-CLASS DIGGING FORCES

Higher output even in tough working conditions

- Bucket -14500 kgf
- Arm - 13000 kgf



BEST-IN-CLASS TRAVEL PERFORMANCE

- Higher Traction Force
- Dual Travel Option
- High Maneuverability

Traction Force : 21500 kgf

EFFICIENT COMBINED OPERATION

Inbuilt **Flow Summation** system and **Swing Priority** function leads to faster swing cycle results in excellent output

FUEL EFFICIENCY



IMPROVED FUEL EFFICIENCY

Advanced CAPO System, Newly Designed CMCU, Power & Working Mode options results in excellent fuel efficiency.

FUEL SAVING KIT

- Monitor undue load and cut down losses.
- Provides better fuel efficiency

NEGATIVE FLOW CONTROL

Optimum balance between pump and engine output for better fuel efficiency



ARM REGENERATION SYSTEM

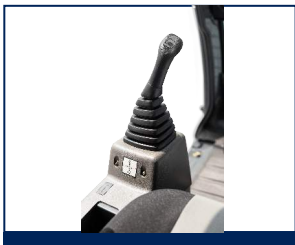
- Smooth Operation
- Prevent Cavitation
- Increased Performance & Fuel Efficiency

ONE TOUCH IDLE & AUTO DECELERATION

Prevents fuel losses by reducing engine rpm during no-load condition

EXCLUSIVE BREAKER MODE

Excellent fuel saving due to exclusive power for breaker operation



NEW ECO MODE

MULTI LANGUAGE

MOBILE CHARGING POINT

INSTRUMENT PANEL

The user-friendly multi language option cluster making it easy to check all critical systems like

- Hydraulic oil temperature,
- Coolant temperature
- Fuel level
- Self diagnostic checks
- Maintenance management to optimizing productivity needs ensuring fuel efficiency

OPERATOR COMFORT

OPERATOR DELIGHT

More space, better visibility and adjustable fully suspension seat, easy to access controls ensure that the operator can work for longer hours without stress or fatigue in the comfortable and safe working environment.

360 degree visibility, fully open sunroof, added side lamp & mirror ensure comfortable, safe working environment.



OPERATOR SEAT

- Easily adjustable fully suspension seat with adjustable arm rest
- Operator seat belt



AIR CONDITIONER (OPTIONAL)

- High Performance Air Conditioner
- Improved AC Ducting
- Water Bottle Cooling System



SPACIOUS CABIN

- More head room, large space, large door for easy entry and exit

REMOVABLE TYPE FLOOR MAT

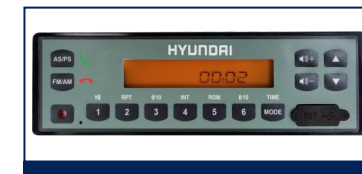


- AC Front Vent
- Hour Meter
- 24V Socket

LED LAMP



INTEGRATED AUDIO SYSTEM WITH BLUETOOTH



RELIABILITY

This Machine is designed for general construction and Infrastructure application like soil Excavation and Sand Loading.



STRONG FRONT ATTACHMENTS

Use of specialized advance steel plates and reinforced design for higher strength and durability

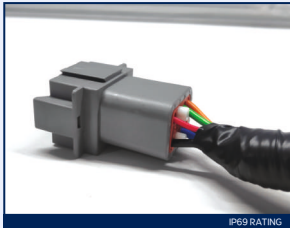
RUGGED UNDERCARRIAGE

X frame provides excellent resistance to torsional bending to enhance structure life



RELIABLE ELECTRICALS

- Dust and water proof connectors
- Longer component life



SWING & TRAVEL SYSTEM

Highly efficient Hyundai designed Swing and Travel system ensure maximum reliability and performance.



LOWER FRAME BELLY GUARD



AIR PRE-CLEANER

- Improves engine performance
- Removes dirt and debris from air before entering air filter
- Improves air filter life
- Low maintenance cost



CASTED BUCKET CONTROL LINK



FORGED RING BODY



SERVICEABILITY

LEADING SERVICE INTERVAL

More efficient cooling system which extend service intervals, minimize operating cost and reduce machine down time.

CHANGE INTERVAL

Hydraulic Oil	5000 hrs
Hydraulic Filter	1000 hrs
Engine Oil	500 hrs
Engine Filter	500 hrs

IMPROVED COOLING EFFICIENCY

- Radiator and oil cooler are arranged side by side to maximize efficiency
- Easily accessible from ground level to clean



LARGE LCD MONITOR

Operator can check the machine's vital signs without any difficulties

- **Maintenance Management**
Proactive maintenance
- **Self Diagnostic**
Reduces down time
- **Warning Indicator**
Ensures safe working

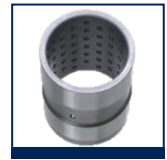
DURABLE MOUNTING PIN BUSH



FUEL FILLER PUMP



DIMPLE BUSH



EASY ACCESSIBILITY

Easy access for maintenance means regular checks get done faster. machines feature easy service access to increase uptime and reduce operating costs.



SAFETY

SAFETY - PEACE OF MIND AND OPERATOR CONVENIENCE

Cabin is integrally welded with low-stress using high strength steel to provide enhanced protection. Handrails and steps are provided for easy operation. Engine fan guard avoid chances of accidental injury.



COUNTER BALANCE VALVE

Works as a hydrostatic brake and prevents machine against accidental roll down in steep gradients.



BOOM & ARM HOLDING SYSTEM

Prevent attachments from drifting against gravity due to prolonged overhanging.



ANTI RESTART FUNCTION

Prevents starter from damage during engine operation.

AUTO ENGINE OVERHEAT & WARM UP FUNCTION



BATTERY DISCONNECT SWITCH



LOWER BELLY GUARD



GREASE NIPPLE WITH CAP



POSITIVE LOCKING CLAMP



TANK SAFETY COVER



EMERGENCY SHUTDOWN SWITCH



FIRE EXTINGUISHER



PARTS & SUPPORT

HYUNDAI GENUINE PARTS

Developed in synergy with our machines, Hyundai parts and lubricants ensure that you get the high levels of performance, reliability and safety that come with the complete Hyundai experience. Enjoy the confidence and assurance of the most stringent testing procedures and the high quality manufacturing processes safeguarding your machine's health. Experience the versatility of our 200+ strong outlet network across India.

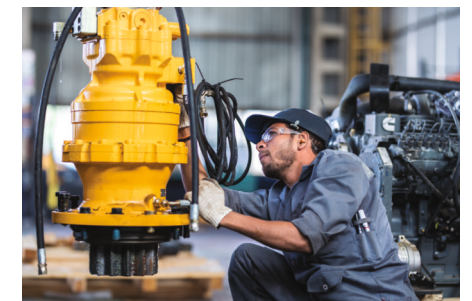
WHY RISK IT?

Maximize profits and extend your machine's life.



BENEFITS OF USING GENUINE HYUNDAI PARTS AND LUBRICANTS

- Genuine Hyundai Parts meet strict specifications and standards in Chemistry, Microstructure and Tensile Strength.
- Benefit from the continuous improvements and advancements made by Hyundai's technical team.
- Improved performance of hydraulics and engine components.
- Enjoy greater productivity with higher uptime
- Higher resale values.
- Reduced oil consumption and unexpected breakdowns.
- Enhanced component life.



HI-TRACK 4G[®]

Our unique remote management system allows customers to access machine operating information & obtain service & maintenance alerts at the touch of a button

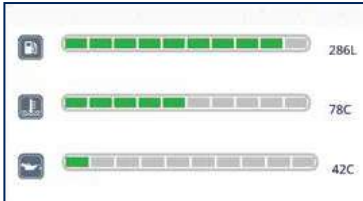


INCREASED PRODUCTIVITY

Remote management system empowers you to enhance the efficiency of your operations. Make better decision by comparing the machine's operating time with its travelling idling & breaker use duration.

CONVENIENT & EASY MONITORING

Enjoy round the clock and on the move access to your machine information through the website or mobile app.



MULTILINGUAL USER INTERFACE
IMPROVED DATA CONNECTIVITY

PROACTIVE MAINTENANCE

Access your machines service & maintenance history with the utmost convenience. Plan your service schedules intelligently with our regular reminders.



ALARMS

Get notified of system alarms & protect your machine from critical faults & experience repairs.

SECURITY & FLEET MONITORING

Protect your machine from theft or unauthorized use. GPS features allows you to create a geo-fence & alerts you if the machine moves out of the defined boundary.

SPECIFICATION

Engine

Maker/Model		Cummins6BT5.9-C	
Rated flywheel horse power	SAE J1995 (Gross) J1349 (Net)	140HP (104KW) @2000rpm	136HP (101KW) @2000rpm
Max Torque	57.6kgf.m @1600rpm		
Displacement	5880cc		

Hydraulic System

Main pump	
Type	Two variable displacement piston pumps
Max. flow	2x203 lpm
Sub-pump for pilot circuit	Gear pump
Cross-sensing & fuel saving pump system	

Hydraulic Motors

Travel	Two speed axis piston motor with counter balance valve and parking brake
Swing	Axial piston motor with automatic brake

Relief Valve Settings

Implement Circuit	330kgf/cm ²
Travel	330kgf/cm ²
Swing Circuit	240kgf/cm ²
Pilot Circuit	35kgf/cm ²
Service valve	Installed

Coolant & Lubricant Capacity

REFILLING	LITER
Fuel tank	340
Engine coolant	35
Engine oil	21
Swing device	5
Final drive (each)	6.0
Hydraulic system / Hydraulic tank	280/150

Drives & Brakes

Drive method	Fully hydrostatic type
Drive motor	Axial piston motor in-shoe design
Reduction system	Planetary reduction gear
Max. drawbar pull	21500kgf (47399lbf)
Max. travel speed (high/low)	5.3kmph/3.4kmph
Gradeability	35 Degree (70%)
Parking brake	Multi wet disc

Undercarriage

X-Leg type centre frame is integrally welded with reinforced box section track frames. The undercarriage includes lubricated rollers, idlers, track adjusters with shock absorbing spring and sprockets and trackchain with triple grouse shoes.

Centre frame	X-leg type
Track frame	Pentagonal box type
No. of shoes on each side	45
No. of carrier rollers each side	2
No. of track rollers each side	7
No. of rail guard each side	1

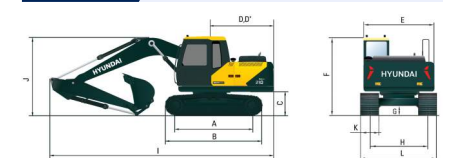
Swing System

Swing motor	Axial piston motor
Swing reduction	Planetary gear reduction
Swing bearing lubrication	Grease bathed
Swing brake	Multi wet disc
Swing speed	11 rpm

Operating Weight

Shoe Width mm (in)	Operating weight kg (lbs)	Ground pressure kg/cm ² (psi)
500 mm (20")	20,450 (45,084)	0.625 (8.89)

Dimensions

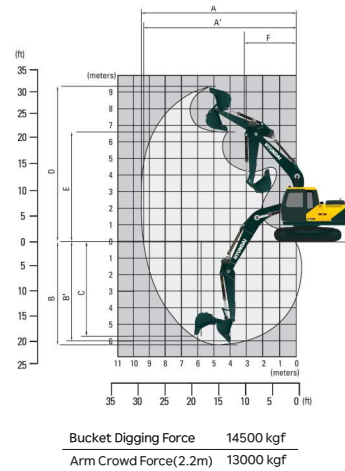


	(mm)	
A	Tumbler distance	3270
B	Overall length of crawler	4060
C	Ground clearance of counter weight	1100
D	Tail swing radius	2845
D'	Rear-end length	2770
E	Overall width of upper structure	2700
F	Overall height of cabin	2990
G	Min. ground clearance	480
H	Track gauge	2200
I	Overall length	9590
J	Overall height of boom	3030
K	Track shoe width	500
L	Overall width	2700

SPECIFICATION

Working Ranges (mm)

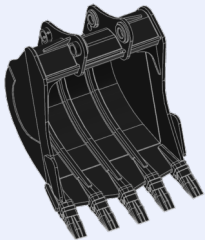
Arm length		*2200	2400
A	Max. digging reach	9,332 (30'7")	9,517 (31'3")
A'	Max. digging reach on ground	9,153 (30'0")	9,342 (30'8")
B	Max. digging depth	5,770 (18'11")	5,970 (19'7")
B'	Max. digging depth (8ft level)	5,560 (18'3")	5,773 (18'11")
C	Max. Vertical wall digging depth	5,094 (16'9")	5,287 (17'4")
D	Max. digging height	9,613 (31'6")	9,721 (31'11")
E	Max. dumping height	6,735 (22'1")	6,844 (22'5")
F	Min. swing radius	3,614 (11'10")	3,402 (11'2")



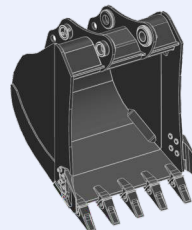
BUCKETS

All buckets are welded with high-strength steel.

HEAVY DUTY
0.87 m³ HD



GENERAL PURPOSE
0.92 m³ GP



Capacity - M ³			Width - mm		Weight - kg	Tooth EA	Recommendation	
Bucket Type	SAE Heaped	CECE heaped	Without side cutters	With side cutters			5.7m Boom 3.6 T CWT	2.2m Arm
HD	0.87	0.75	1,073	-	875	5	●	●
GP	0.92	0.81	1,140	1215	736	5	■	■
GP*	0.92	0.81	1,145	1260	738	5	■	■

- : Applicable for materials with density of $\leq 2,000 \text{ kg/m}^3$
- : Applicable for materials with density of $\leq 1,600 \text{ kg/m}^3$
- ▲ : Applicable for materials with density of $\leq 1,100 \text{ kg/m}^3$
- * : Standard Bucket

SPECIFICATION

ATTACHMENT

Boom and arm are of all-welded with a low-stress, full-box section design. 5.7m mono boom and 2.2m & 2.4m Arm are available. Buckets are all-welded, high-steel implements.

DIGGING FORCE

Arm	Length	mm(ft.in)	*2200 (7'2")	2,400 (7'10")
	Weight	kg(lbs)	544	577
Bucket Digging Force	SAE	kN	123	123
		kgf	12500	12500
		lbf	27600	27600
	ISO	kN	142	142
		kgf	14500	14500
		lbf	31900	31900
Arm Crowd Force	SAE	kN	122	111
		kgf	12400	11300
		lbf	27300	25000
	ISO	kN	128	117
		kgf	13000	11900
		lbf	28800	26200

*Standard configuration

STANDARD OPTIONAL LIST

NOTES

Standard Equipment

ISO Standard Cabin
All-weather Steel Cab with All-around Visibility
Safety Glass Windows
Sliding Fold-in Front Window
Sliding Side Window
Accessory Box
Computer Aided Power Optimization (New CAPO) system
3-power Mode, 2-work Mode
Auto Deceleration & One Touch Deceleration System
Auto Engine Overheat Prevention System
Self Diagnostic System
Centralized Monitoring
LCD Display
Engine Speed
Clock & Error Code
Mobile Charging Point
Fuel Level Indicator
Engine Coolant Temperature Indicator
Hyd. Oil Temperature Indicator
Warning
Fuel Level
Engine Oil Pressure
Engine Coolant Temperature
Hyd. Oil Temperature
Low Battery
Air Cleaner Clogging
Door and Cab Locks, One Key
One Outside Rearview Mirror
Fully Adjustable Suspension Seat
Pilot-operated Joystick
Two Front Working Lights and Two Cabin Work Lights
Visibowl Precleaner
Removable Type Floor Mat
Electric Horn
Batteries(2 x 12V x 100AH)
Battery Master Switch
Removable Clean Out Screen For Oil Cooler
Automatic Swing Brake
LED Working Lamps

Removable Reservoir Tank
24V Power Socket
Fuel Pre-filter
Boom Holding System
Arm Holding System
Counter Weight(3800 kg)
Mono Boom (5.7m, 18'8")
Arm (2.2m,7'2")
Standard Bucket (0.92m ³ GP)
Track Shoes (500mm)
Track Rail Guard
Bluetooth FM Radio/USB player
Operator Kit
Tool Kit
Remote Management System (Hi-Track)

Optional Equipment

Beacon Lamp
Single Acting Piping Kit
Fuel Refilling Pump
Travel Alarm
Operator Seat Belt
Emergency Shutdown Switch
Air Conditioner
Track Shoe (600mm, 24")
Cabin Front Protector
Fire Extinguisher
Various Optional Arms
Arm (2.4 m)
Various Optional Bucket & Attachments
Heavy Duty Bucket (0.87 m ³)
Rock Breaker